



Northern Periphery and
Arctic Programme
2014–2020

www.interreg-npa.eu

NORTHERN PERIPHERY AND ARCTIC PROGRAMME 2014-2020

Kirsti Mijnhijmer, Joint Secretariat
29th October – Gdynia, Poland



EUROPEAN UNION

Investing in your future
European Regional Development Fund



Northern Periphery and
Arctic Programme

2014–2020

Basic facts


- Approved on 16th December 2014
- Transnational: 9 programme partner countries (inside and outside EU)
- Budget approx. 56 MEUR
- New aspects: more explicit focus on the Arctic, SME involvement



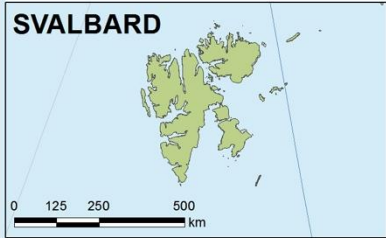
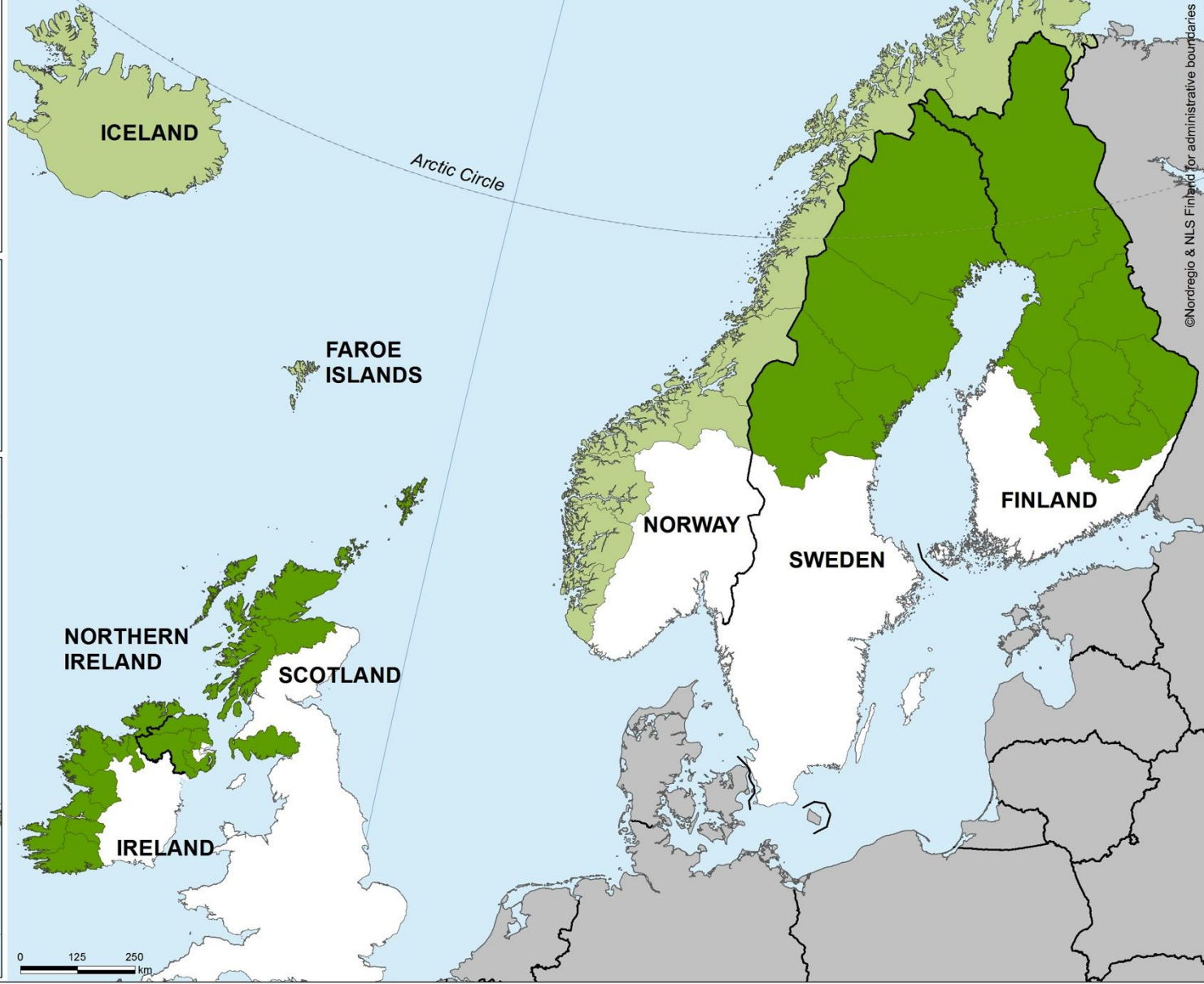
EUROPEAN UNION

Investing in your future
European Regional Development Fund

Regions belonging, entirely or partially, to the Northern Periphery and Arctic Programme area

-  National Boundary
-  in EU Member States
-  Outside the EU

Northern Periphery and Arctic Programme Area 2014 – 2020





Northern Periphery and
Arctic Programme

2014–2020

Priority Axes

1. Using Innovation to Maintain And Develop Robust And Competitive Communities
2. Promoting Entrepreneurship to Realise the Potential of the Programme Area's Competitive Advantage
3. Fostering Energy-Secure Communities through Promotion of Renewable Energy and Energy Efficiency
4. Protecting, Promoting and Developing Cultural and Natural Heritage

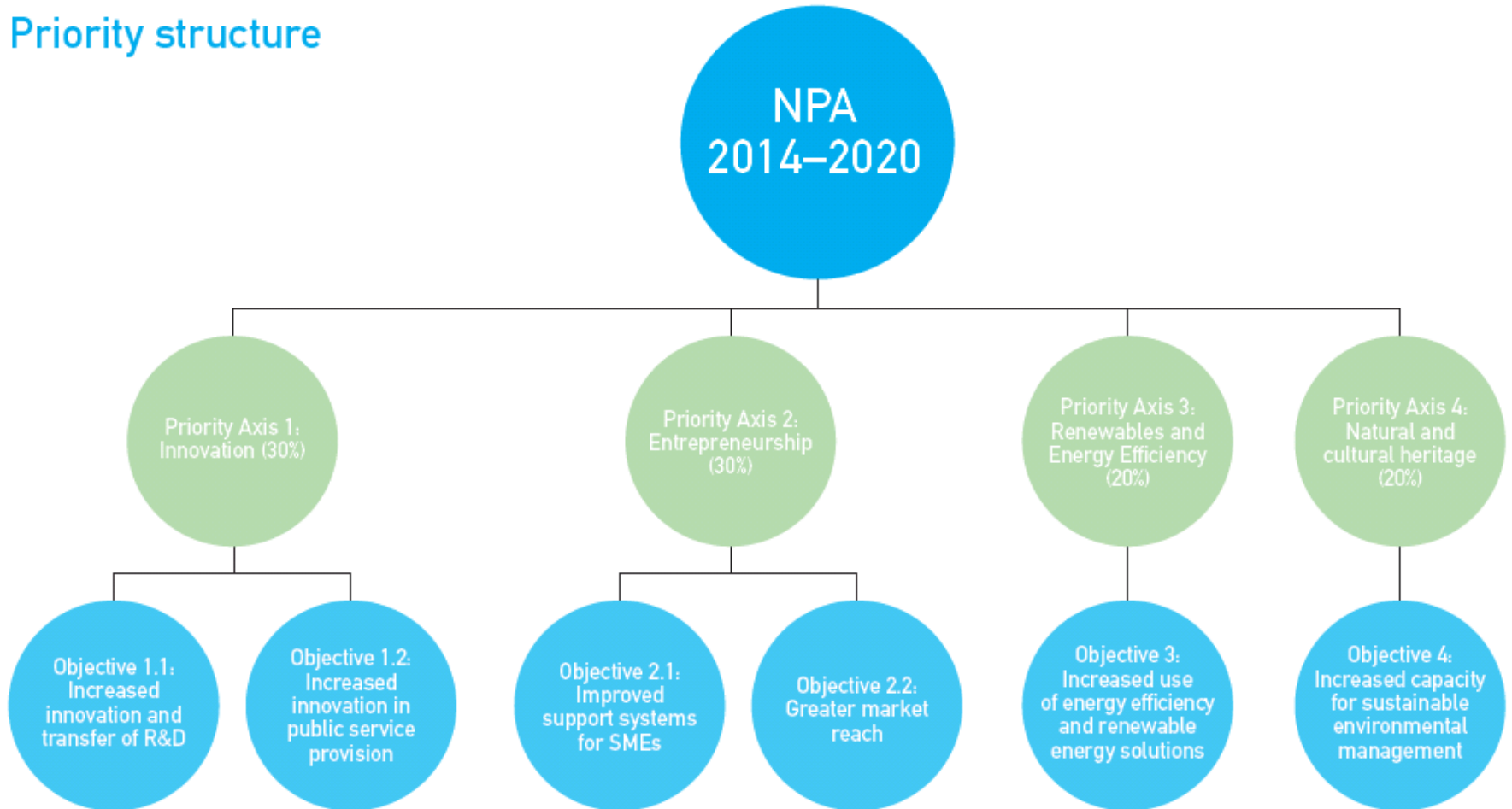


EUROPEAN UNION

Investing in your future
European Regional Development Fund



Priority structure





Funding

| Funding Source | Type | Available funding | Grant Rate |
|---|-----------------|-----------------------------------|------------|
| Member States | ERDF | 47 197 306 EUR | 65% |
| Norway | ERDF equivalent | 4 840 000 EUR | 50% |
| Iceland | ERDF equivalent | 1 584 000 EUR | 60% |
| Faroe Islands | ERDF equivalent | 701 501 EUR | 65% |
| Greenland | ERDF equivalent | 878 294 EUR | 65% |
| 20% source for partners outside the Programme area | ERDF | Allocated from the MS ERDF source | 65% |





Eligible partners

- At least 3 partners from 3 programme partner countries, at least one EU MS.
- The Lead Partner should be public, from programme area (EU MS, NO & IS).
- Other partners: public or private, from programme area (SMEs max. 50%)
- Geographical flexibility, if justified





What kind of projects are supported?

- Addressing main challenges programme area
- Quality Objectives, such as:
 - Concrete: tangible solution = product/service
 - Innovative: new or innovative to the partners, the countries involved, or the Programme area.
 - Focused: contributing to the result sought (change) for the relevant specific objective
 - Transnational: clearly drawing on the results of cooperation, e.g. transferring models/ knowledge/ technology, critical mass, etc.

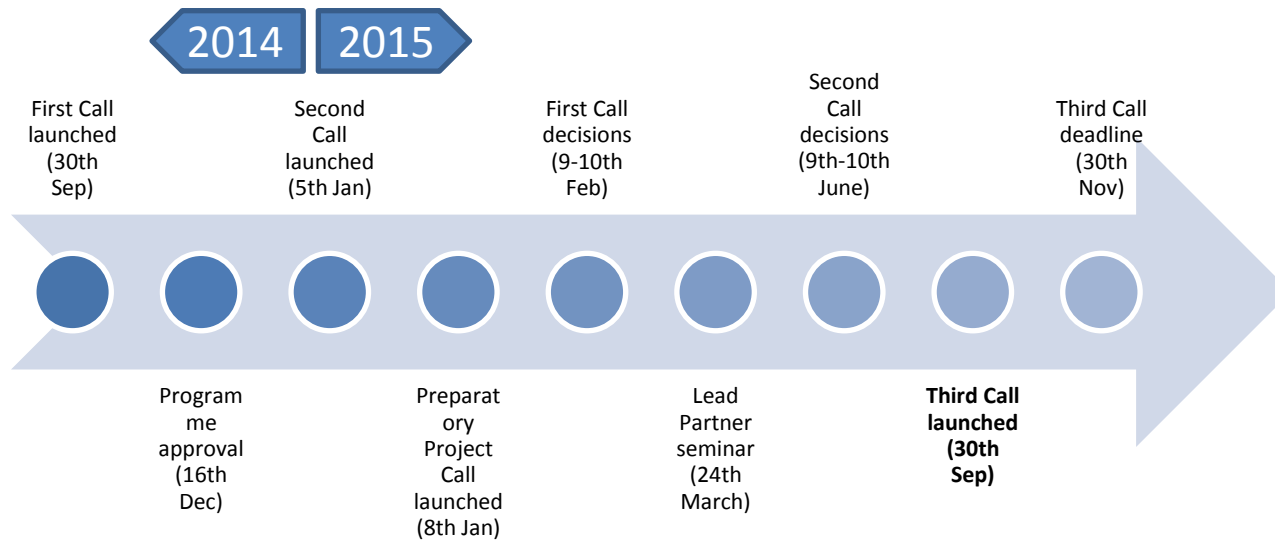




Northern Periphery and
Arctic Programme

2014-2020

A busy year



EUROPEAN UNION

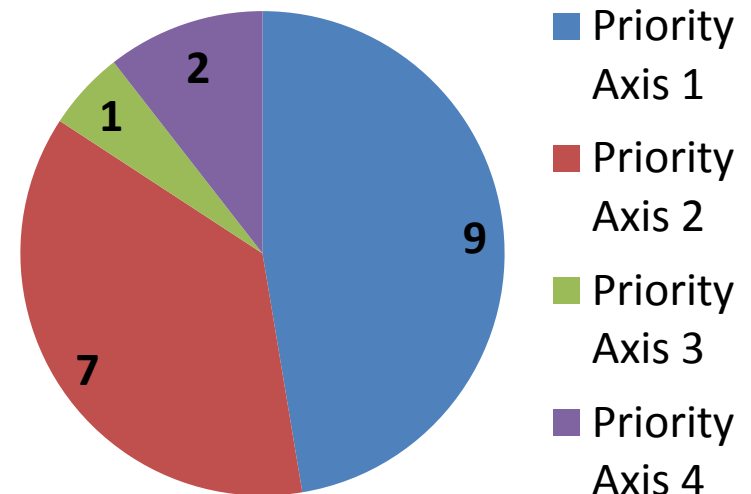
Investing in your future
European Regional Development Fund



Approved Projects

- First Call: 13 projects
- Second Call: 7 projects
- Preparatory Call
(= seed money): 14
projects
- Funding allocation
approx. 33%

Distribution by Priority





Next steps

- Third call until 30th Nov: focussed on Priority Axis 3 & 4
- Fourth call: autumn 2016? (consultation, MC written procedure December)
- How to Apply Seminars, online guidance
- Future: explore possibility of coordinated projects/calls with other programmes





Northern Periphery and
Arctic Programme
2014–2020



ROADEX
Network
For better rural roads
www.roadex.org

Example: ROADEX

- 4 projects over 3 programme periods, now self-sustained
- Topic: maintenance of low volume roads in harsh climate with special demands
- Unique aspect: national road authorities working across borders
- Countries involved: SE, FI, IS, NO, SC, IE



EUROPEAN UNION

Investing in your future
European Regional Development Fund



Northern Periphery and
Arctic Programme
2014–2020



ROADEX
Network
For better rural roads
www.roadex.org

Example: ROADEX

- Main outputs: e-learning tool, consultative service
- Impacts:
 - substantial savings for authorities in charge of roads
 - knowledge applied to new infrastructure projects (mining road), also outside EU (New Zealand, potentially development countries)



EUROPEAN UNION

Investing in your future
European Regional Development Fund



Northern Periphery and
Arctic Programme

2014–2020

E-learning

- 4 lessons
- Self-test questions at each stage
- 6 languages



Lesson 1
Permanent Deformation

CONTINUE



Lesson 2
Roads on Peat

CONTINUE



Lesson 3
Drainage of Low Volume Roads

CONTINUE



Lesson 4
Environmental Considerations for Low
Volume Roads

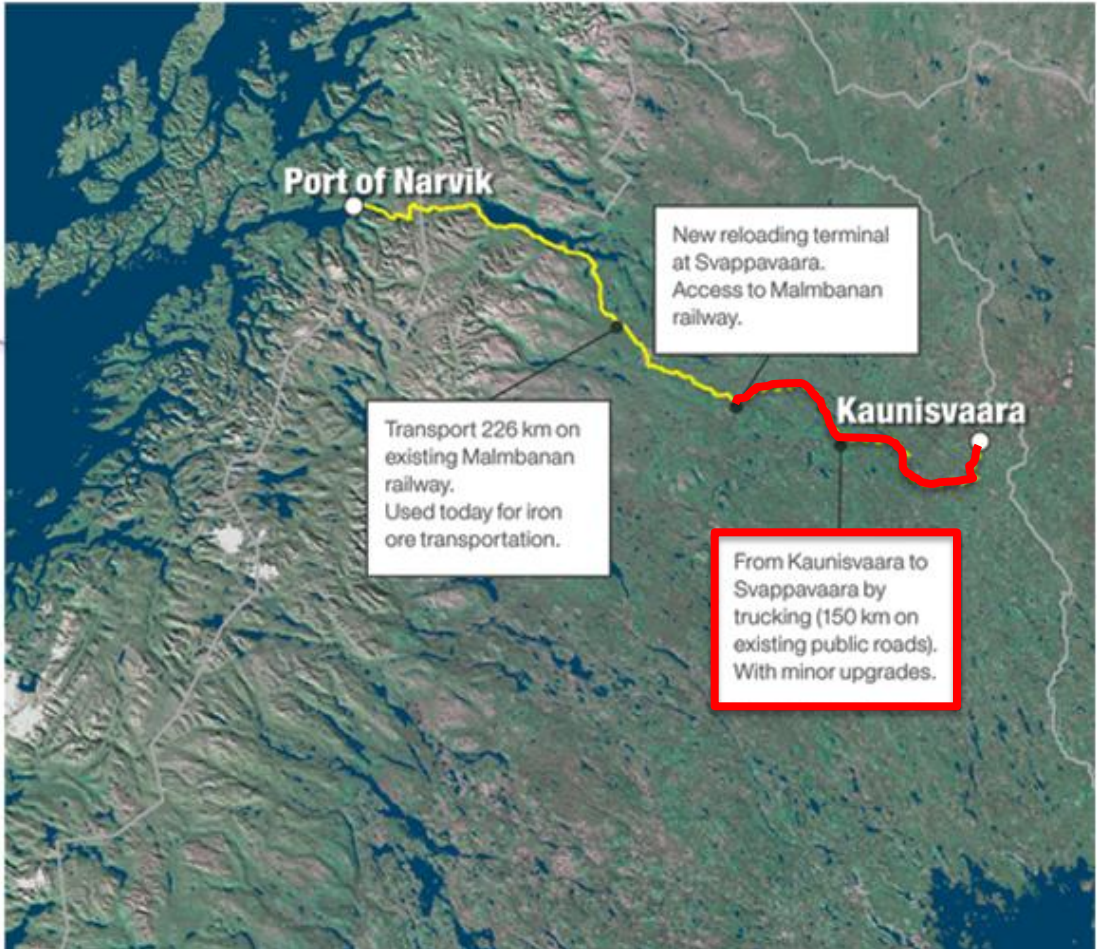
CONTINUE



EUROPEAN UNION

Investing in your future
European Regional Development Fund

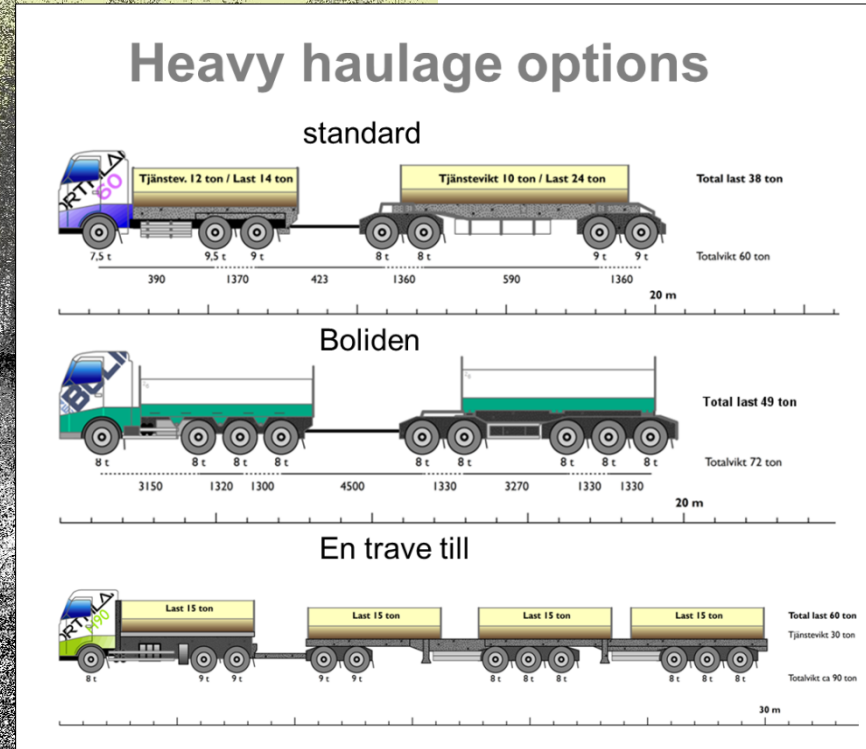
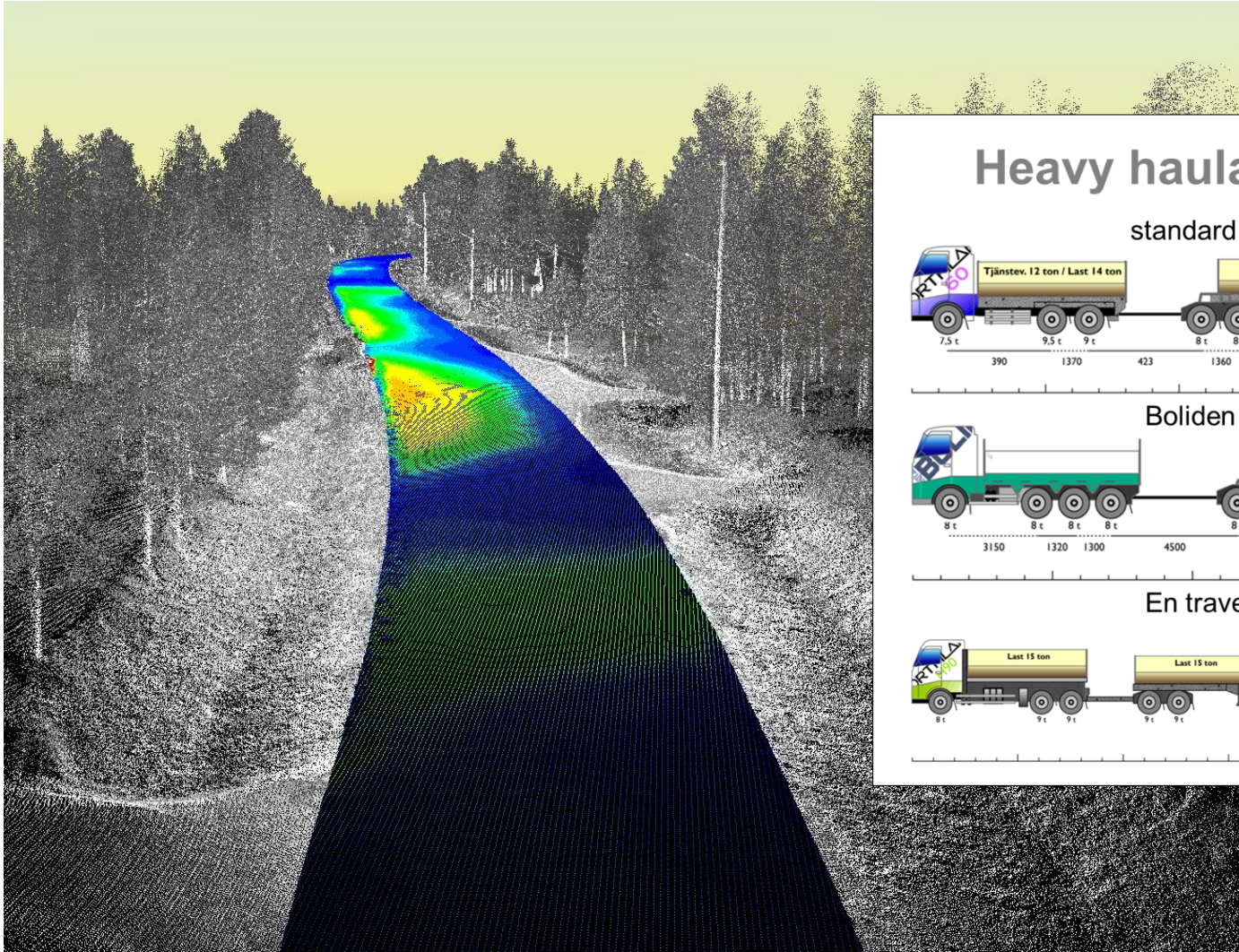
Impact: Kaunisvaara to Svappavaara mining road



EUROPEAN UNION

Investing in your future
European Regional Development Fund

Impact: Kaunisvaara to Svappavaara mining road





Northern Periphery and
Arctic Programme

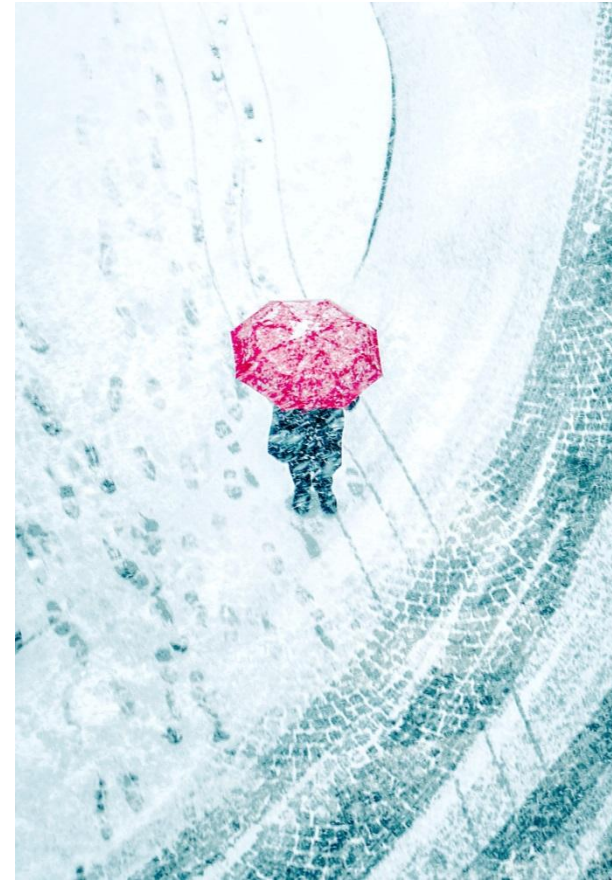
2014–2020

**Thank you for
listening**

Kirsti Mijnhijmer

kirsti.mijnhijmer@interreg-npa.eu

www.interreg-npa.eu



EUROPEAN UNION

Investing in your future
European Regional Development Fund